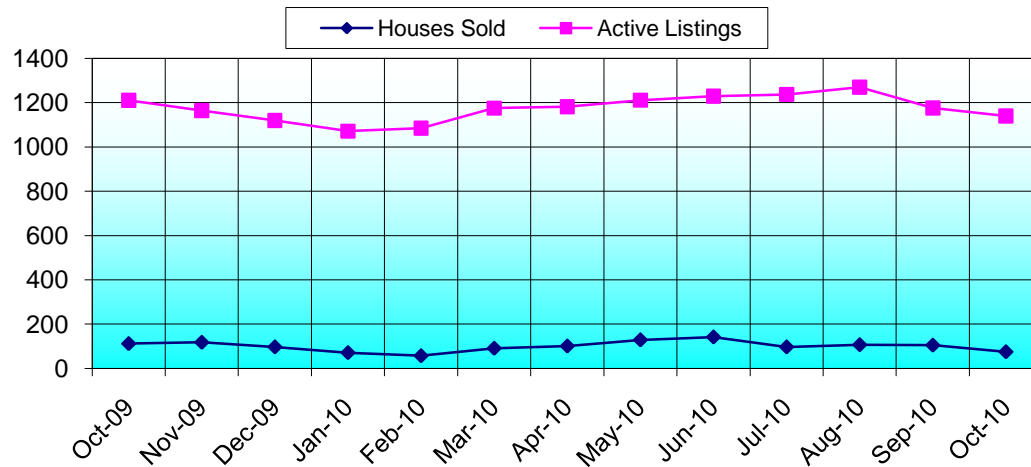


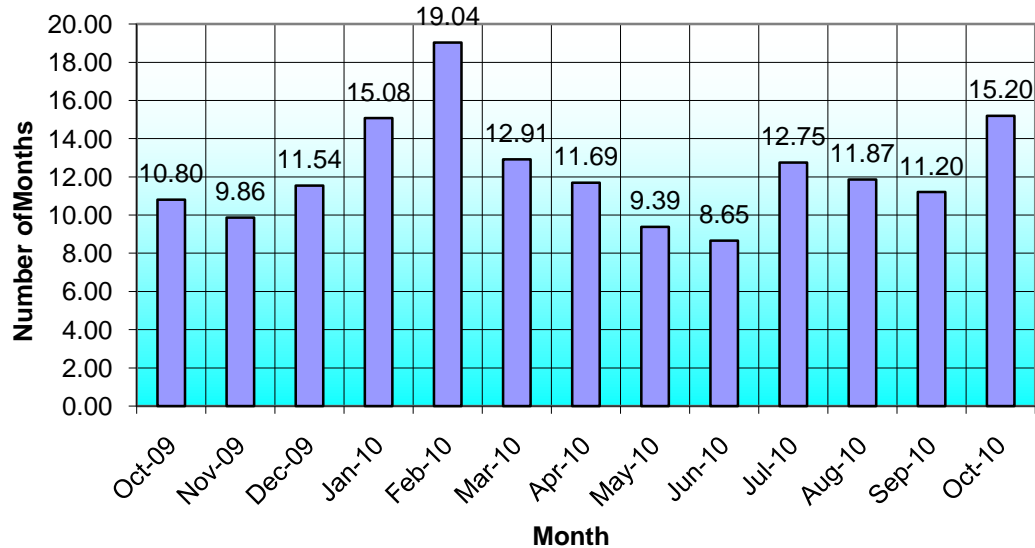
Washington County 2009 - 2010

Month	Houses Sold	Active Listings	Inv. Months	Days on MKT	Absorption	Pending
Oct-09	112	1,210	10.80	158	9.26%	134
Nov-09	118	1,164	9.86	131	10.14%	89
Dec-09	97	1,119	11.54	126	8.67%	92
Jan-10	71	1,071	15.08	146	6.63%	95
Feb-10	57	1,085	19.04	149	5.25%	92
Mar-10	91	1,175	12.91	101	7.74%	158
Apr-10	101	1,181	11.69	145	8.55%	232
May-10	129	1,211	9.39	152	10.65%	81
Jun-10	142	1,229	8.65	105	11.55%	126
Jul-10	97	1,237	12.75	110	7.84%	122
Aug-10	107	1,270	11.87	166	8.43%	145
Sep-10	105	1,176	11.20	124	8.93%	100
Oct-10	75	1,140	15.20	118	6.58%	96

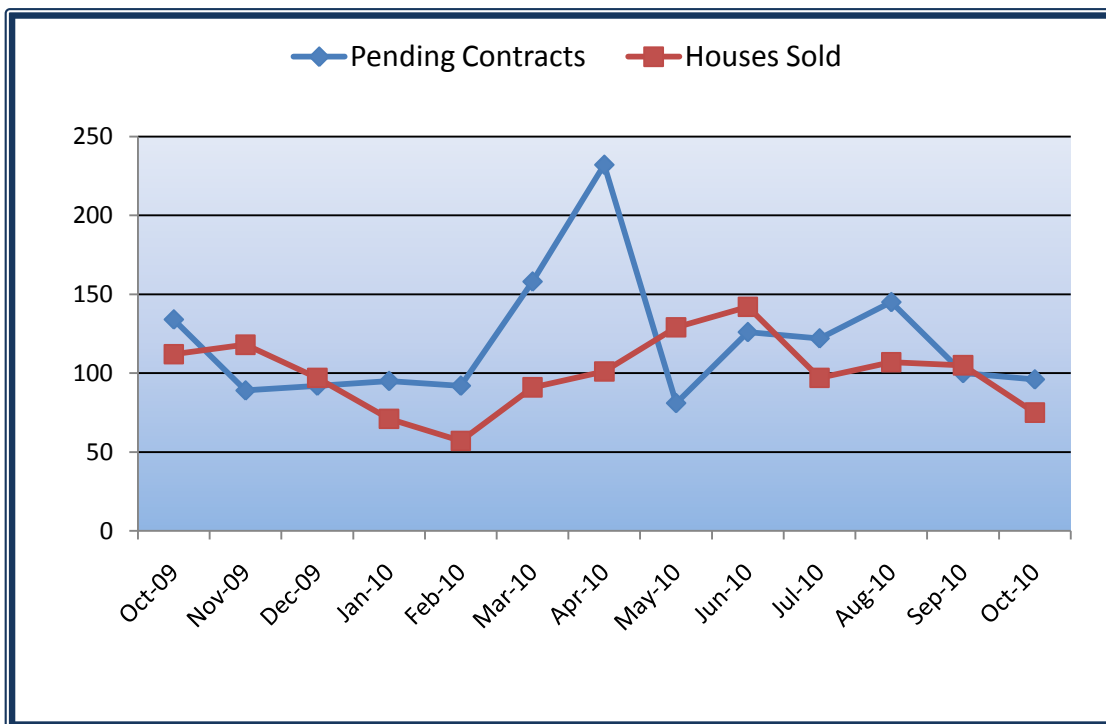
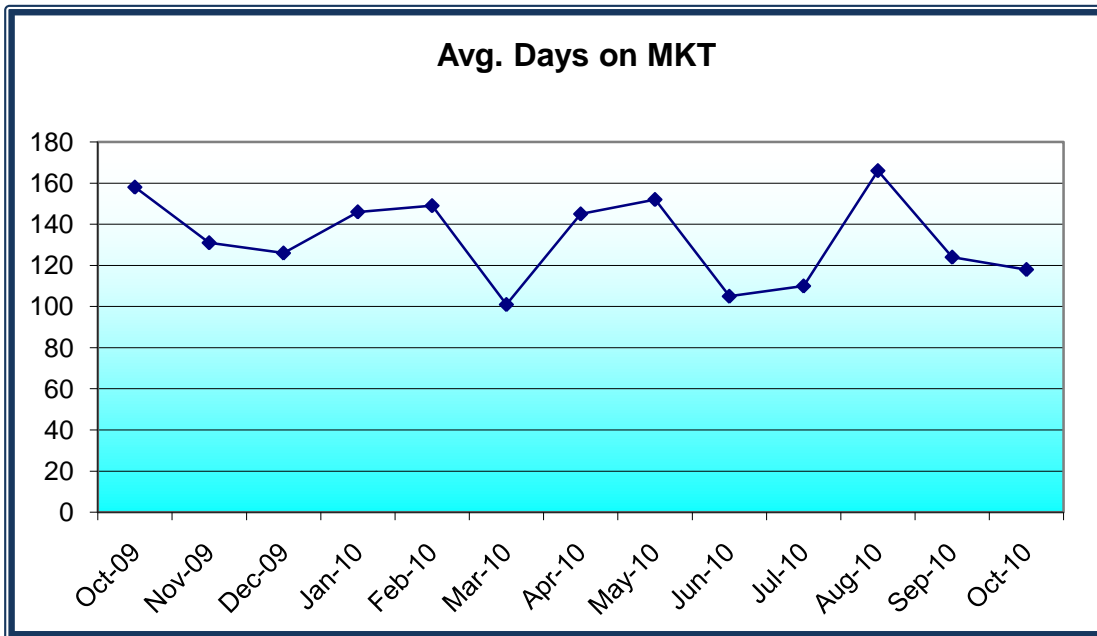
Sold vs. Active Listings



Inventory Months



Washington County 2009 - 2010



Time on Market

	Units Sold						
	Apr-10	May-10	Jun-10	Jul-10	Aug-10	Sep-10	Oct-10
1-30 days	34	35	58	30	30	29	17
31-60 days	9	16	23	19	16	15	10
61-90 days	15	12	15	20	10	11	13
91-120 days	2	8	9	7	16	14	14
Over 120 days	41	58	37	21	35	36	21
	101	129	142	97	107	105	75

Information from MRIS